

LaCrosse Fairgrounds Speedway

4 & 6 - CYLINDER

2025

ENDURO 200

SATURDAY

AUG. 30 - \$1200 to win

ENDURO 200 EVENT SCHEDULE:

4:00 - PIT GATE OPENS FOR ENDURO

4:30 - ENDURO CAR INSPECTION BEGINS

6:15 - DRIVERS' MEETING

6:30 - SCORER'S MEETING - (IN GRANDSTANDS)

6:45 - BEAUTY CONTEST (on Frontstretch)

Pitting: Teams park inside 5/8th mile

Staging: Grid Line-up is on the grass in turn 4 of the 5/8th mile track after inspection.

Note: This 200 lap race will be run in TWO segments, with a break between laps 90-110.

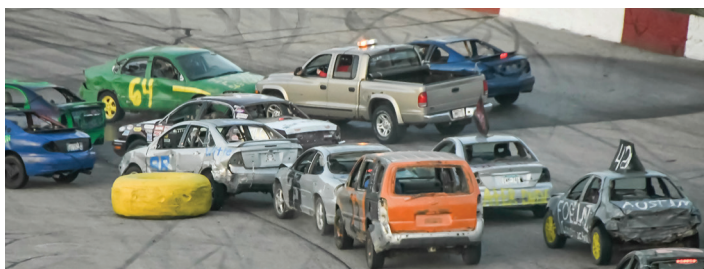
HAVE FUN • RACE YOUR FRIENDS • IT'S A BLAST!



BEST APPEARING CAR CONTEST



TEAM MUST PROVIDE LAP SCORER



JAM TRUCK TO PUSH IDLE CARS AWAY



SIDE-BY-SIDE RACING ACTION



BONUS PRIZES AFTER THE RACE

\$1200 TO WIN - TOP 20 PAY- \$650 BONUS PAY!

\$1200 TO WIN

**AUGUST 30, 2025 - TOP 20 POSITIONS RECEIVE A PAYOUT!
PLUS - BONUSES AVAILABLE!**

\$100 TO LEADER ON LAP 50 AND 100

\$50 BONUS TO HIGHEST FINISHING IN THESE CATEGORIES:

Female, SUV, Driver Under 18, Driver Over 55, Mini-Van, Truck.

Plus! Beauty & Ugly Contest!

**FIRST 80
Entries Get a
FREE T-SHIRT**

**RACE PAYOUT
Based on 80 Entries**

**THE TOP 20
POSITIONS PAY!**

2. \$ 300

3. \$125

4. \$ 80

5. \$ 60

6. \$ 50

7. \$ 45

8. \$ 40

9. \$35

10-20: \$25 Each

EVENT SCHEDULE

4:00 • Pit Gate Opens
4:30 • Car Inspection
6:15 • Drivers' Meeting
6:30 • Scorers' Meeting
6:45 • Beauty Contest
7:00 • Enduro 200

GRANDSTAND ADMISSION TICKETS

Adults: \$12
Student (Age 12-17): \$7
Kids (Age 6-11): \$4
PIT PASSES
Each Person: \$25

1) **Any 4-Cylinder or 6-Cylinder car or MINIVAN is permitted**, (NO FULL SIZE Trucks. NO HONDA CRX's or CRV's). Must have a complete Stock Body, Frame, and Suspension. No Bracing anywhere, except inside the driver's compartment. Dashboard, steering and pedals must remain stock for that make and model. All side mirrors MUST be removed. Loose interior items such as carpet and rear lower seat cushion may be removed. Hood and trunk must open for inspection. Dash must remain Intact. 2) **Stock carburetor / fuel injection system** for that make and model. NO Turbo/Super charged or all-wheel drive cars. 3) **Stock Transmission, exhaust and unaltered rear end** for that make and model. Catalytic converter may be removed. 4) **Battery must be** securely fastened and covered. 5) **Passenger tires only. Wheels and tires must be of like size, OEM ONLY.** 6) **Gas Tank:** If stock gas tank is ahead of rear axle, it may remain in place. If stock gas tank is behind rear axle, it must be replaced with a fuel cell or boat tank (maximum of 6.6 gallons). Fuel cell / boat tank must be covered, secured, and located in trunk. Fill with **no more than 2 gallons** of gas! 7) **Roll Bar:** (Optional) A single hoop roll bar is accepted, or two (Minimum of 1.5") pipes from ceiling to floorboard recommended. Roll bar must be welded or bolted to car. In any roll bar installation, only interior fabric panels and headers may be removed for bar installation. 8) **Driver's door** must be welded or chained shut. Driver's side door plates recommended; must be flat with no "catching" edges (A leaf spring separated and fastened to the outside of the door allowed). Passenger door must be chained, but must open when chain is removed. 9) **Safety:** Approved helmets (SA Rated/No Motorcycle (M) Helmets), seat belts, gloves and long sleeves required. Racing seats allowed. 10) **Glass:** All Glass (Except Windshield) must be removed (prior to your arrival). Third brake light must remain intact. All sunroofs must be covered with a minimum 1/8" steel plate. 11) **No Antifreeze.** Drain before you get to the speedway. 12) Cars must be painted in easy to see colors. Car numbers on doors must be at least 20" tall and in contrasting color to background. Roof #'s must be at least 36" in height. Be prepared to change your number if necessary. 13) **Tech Inspection:** We will attempt to see that you can compete. Misrepresentation or deviation of the rules will result in penalty laps assessed at the beginning of the enduro. 14) **MISC.:** No two way communications. Bumpers may be chained. An 8" x 14" hole may be cut in hood. Hood can be chained only. A "jam truck(s)" will be used. Any alcohol consumption by any team member (driver or crew) prior to or during event will result in immediate disqualification. Penalties assessed in starting positions or "start" laps. 15) **Scorers:** Each Driver must provide a lap scorer with pen in grandstands for entire race. **NOTE:** Race will have "Break" between laps 90-110. **Track may be watered.** 16) **Any vehicle left on Speedway or Fairgrounds property for more than 48 hours will be considered abandoned.** 17) **# OF Laps / PURSE** is subject to change with the overall number of cars entered. 18) **All cars must go through tech inspection to race.** 19) Age Requirements: Driver Must be a minimum of age 16 to race, age 10 minimum for pit entry with a signed parent Minor's release. 20) Red Flag. If there is a red flag you must stop as soon as possible. Failure to stop within a reasonable amount of time (like 4-8 car lengths) will result in at least a 2-lap penalty. Rule Chairman: Austin Wells 608-786-1525 (M-F 9-4 pm). E-mail: awells@lacrossespeedway.com

CAR #

**2025 OFFICIAL
ENTRY FORM**

☐ Advance: \$30 ☐ Late: \$40

(Entry Fee Includes one Pit Pass)

**ADVANCED ENTRY DEADLINE:
AUGUST 23**

DRIVER'S NAME(S): _____ (Team's 2nd Driver:*) _____

STREET ADDRESS: _____

CITY: _____ STATE: _____ ZIP CODE: _____

PHONE #: () _____ - _____ • BIRTHDATE(S) _____

*-TEAMS: MUST USE SAME CAR IN RACE (Example - one team driver runs 1st half, other driver races the 2nd half)

SELECT CATEGORY
(IF ELIGIBLE)

☐ SUV

☐ Female

☐ Under age 18

☐ Mini-Van

☐ Over Age 55

☐ Truck

MAIL TO:

LaCrosse Speedway Enduro
PO Box 853, West Salem, WI
54669

All Registrations: Numbers will be selected on 1st-come basis by entry postmark date. No duplicate numbers will be issued. ADVANCE Registrations: Must be POST MARKED or Received by Aug. 23.